

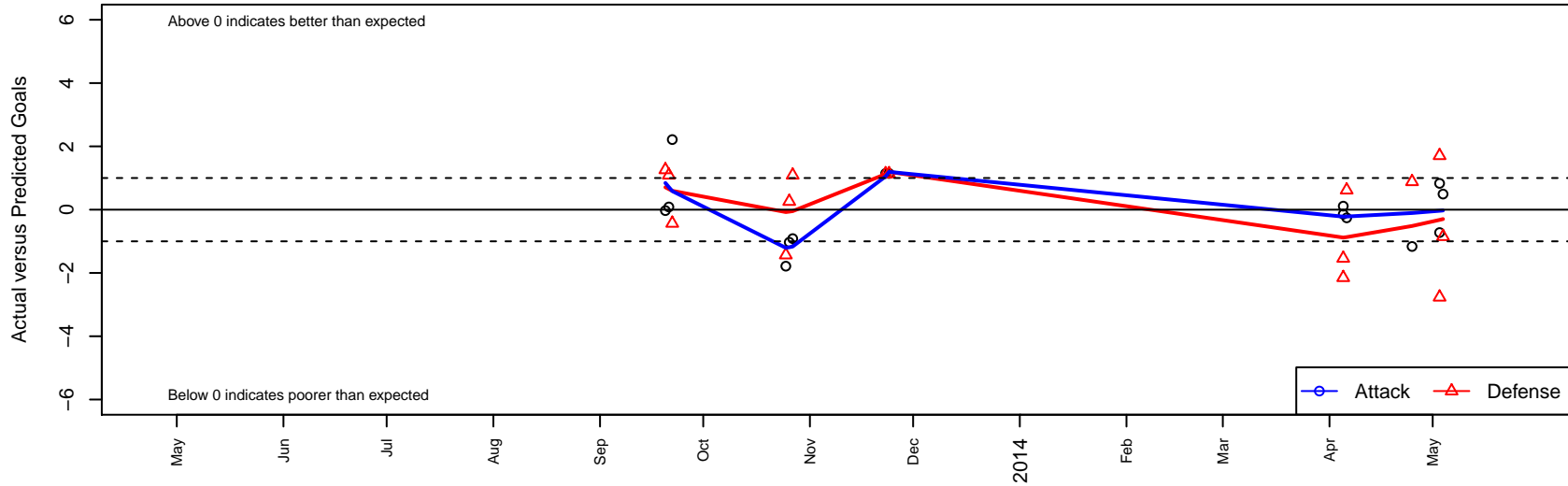
# SLSG-Metro ECNL G99

G99 total strength=1562  
 attack=19.17 defense=10.28  
 alt names used:  
 SLSG-Metro ECNL U14

Venues played:  
 ECNL U14



**SLSG-Metro ECNL G99**  
 Dots are actual minus expected GF (blue circles) and GA (red triangles).  
 Blue line is smoothed change in attack strength. Red is smoothed change in defense strength.



	<b>date</b>	<b>home</b>		<b>away</b>		<b>venue</b>	<b>pred.home</b>	<b>pred.away</b>
16991	2014-05-04	SLSG-Metro ECNL G99	1	Solar Chelsea SC ECNL G99	3	ECNL U14	0.51	2.15
16926	2014-05-03	SLSG-Metro ECNL G99	2	AHFC ENCL G99	4	ECNL U14	1.17	1.23
16952	2014-05-03	Texas Rush ECNL G99	0	SLSG-Metro ECNL G99	1	ECNL U14	1.71	1.72
16803	2014-04-25	SLSG-Metro ECNL G99	0	SLSG ECNL G99	0	ECNL U14	1.16	0.88
16636	2014-04-06	Sockers ECNL G99	1	SLSG-Metro ECNL G99	0	ECNL U14	1.62	0.26
16553	2014-04-05	FC Wisconsin Eclipse ECNL G99	2	SLSG-Metro ECNL G99	4	ECNL U14	0.46	4.14
16577	2014-04-05	Vardar ECNL G99	4	SLSG-Metro ECNL G99	2	ECNL U14	1.85	1.89
15560	2013-11-24	Sporting Blue Valley ECNL G99	0	SLSG-Metro ECNL G99	4	ECNL U14	1.13	2.86
15506	2013-11-23	Sporting Blue Valley ECNL G99	0	SLSG-Metro ECNL G99	4	ECNL U14	1.13	2.86
14955	2013-10-27	Colorado Storm ECNL G99	1	SLSG-Metro ECNL G99	0	ECNL U14	2.09	0.91
14847	2013-10-26	Real Colorado ECNL G99	2	SLSG-Metro ECNL G99	0	ECNL U14	2.26	1.03
14828	2013-10-25	Colorado Rush ECNL G99	2	SLSG-Metro ECNL G99	0	ECNL U14	0.57	1.79
13908	2013-09-22	SLSG-Metro ECNL G99	4	Colorado Rush ECNL G99	1	ECNL U14	1.79	0.57
13780	2013-09-21	SLSG-Metro ECNL G99	1	Colorado Storm ECNL G99	1	ECNL U14	0.91	2.09
13755	2013-09-20	SLSG-Metro ECNL G99	1	Real Colorado ECNL G99	1	ECNL U14	1.03	2.26